

# ASSEMBLY GUIDE

## Attach Dispenser to Bracket

You will need the dispenser bracket, dispenser, dispenser key, the provided, small allen wrench, 4 screws and 2 washers to mount the dispenser to the bracket correctly.

NOTE: The dispenser also comes with optional screws and anchors for wall mounting that are not needed for the stand assembly.

Unlock the dispenser at the top with one of the (2) provided keys and open. Push gate up to unhinge and move to the right to access the reservoir and feed tube.

Remove reservoir and tube by pulling straight out.

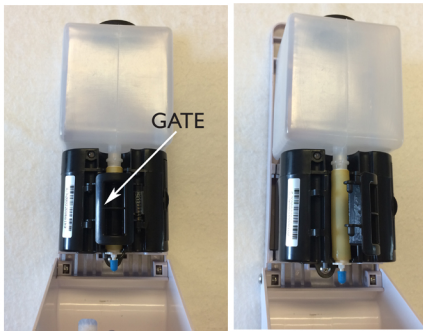
Insert screws into the (2) upper holes, do not tighten yet. Just screw in enough to slide the dispenser onto the screws. Line up bottom holes to bracket holes and attach the (2) screws with washers. Center dispenser left to right and then tighten all four screws.

Re-install the reservoir and tube into the dispenser by sliding straight in. **IMPORTANT:** In order for the dispenser to function properly, you need to make sure that the white tab of the tube slides in on the outside of the black frame. Close gate and lid, remove blue nozzle cover, lock the lid to dispenser and the assembly is ready.

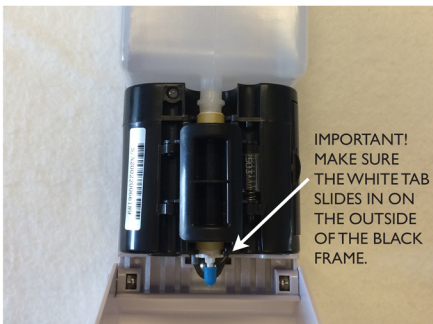
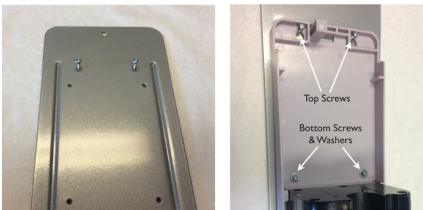
## Dispenser and Bracket Components



## Open Gate to Remove Reservoir



## Attach Dispenser to Bracket



## FINISHED STAND



## Assemble Base and Pole

Base plate has a hole in the middle for attaching to the stand pole.

NOTE: Bottom of the base is countersunk to accommodate the screw.

Remove screw from pole bottom, place screw through the bottom plate and re-attach to the pole. Tighten with the provided allen wrench.

## Attach Dispenser to Pole

Loosen adjustable height knob on pole and pull top pole up until you can see the (2) installation holes for the dispenser assembly. Attach the dispenser bracket to the pole using the (2) thumb screws and caps. Place removable black drip tray on bottom shelf.

## Attach the Sign Holder

Remove screw from top of pole bracket and turn bracket around so flange is facing up. Screw bracket back into place. Attach the sign holder with the wingnut connection to the bracket. Sign holder can be adjusted for vertical or horizontal format by simply turning.

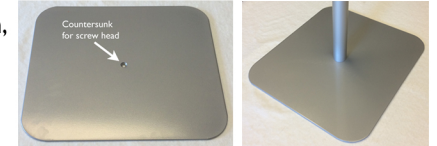
## Batteries and Hand Sanitizer

Dispenser requires (6) AA batteries to operate. Batteries load in the right side of dispenser. The dispenser can use most hand sanitizer gels that are made for dispensers. (Batteries and hand sanitizer are not included)

## Base Plate Top View Pole Bottom



## Base Bottom View Completed Base



## Mount Dispenser to Pole

